

## THERMAL BINDING ACCELERATED BY DROP&GO TECHNOLOGY

# Accel cube

You'll get faster, stronger binding in a flash with our next generation of high-performance, off-line, automated, binding machines. The new Accel series boasts the fastest and most productive binding speed in the industry.

- Greater strength and quality for your documents
- More efficient than ever



Bindomatic has enhanced our Drop&Go Technology, making the Accel Cube an amazing two times faster than the previous generation, 45x faster than punch and bind, and 30x faster than tape binding. Rivalled only by the Bindomatic® Ultra, documents move through the machine at the rate of 60 documents per minute — dramatically boosting efficiency. The Cube features additional upgrades including increased quality and strength of the bound documents as well as improved appearance of the machine.

The Cube is the ideal binding solution for office/corporate walk-up print stations, as well as volume demanding print room environments. It delivers professionally-bound documents, without the need of trained operators.

**The Bindomatic® Accel Cube is available to buy or for lease.**

Contact your Binding Efficiency Expert for details.



**BONUS!** System includes additional desktop unit for editing.

#### DOCUMENT SIZE

A4 — portrait bound orientation

#### SYSTEM CAPACITY

From 1 to 150 sheets of 80 gsm paper

#### PROCESSING SPEED

Batch-load up to 4 documents in one go every 4 seconds\*

\* *subject to user environment*

#### DOCUMENT SPINE WIDTH

from 1.5 to 15 mm

#### MACHINE DIMENSIONS

L 511 x W 475 x H 360mm

#### MACHINE WEIGHT

26 kg

#### POWER SUPPLY

230V, 50/60Hz

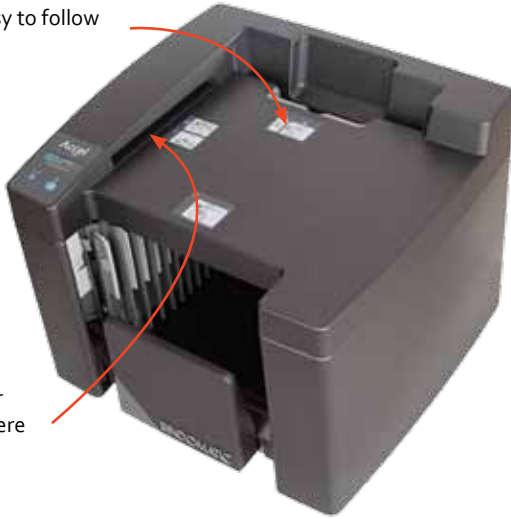
**BINDOMATIC®**  
BINDING EFFICIENCY EXPERTS

www.bindomatic.com | Phone: +46 8 709 58 00

Box 27036 • SE- 102 51, Stockholm, Sweden



Step-by-step, easy to follow instructions.



Automatic cover size selector where the paper set is measured.

Insert unbound documents in the loading area.



The heating plate bind the paper sheets and covers together in seconds, then moves the finished documents to the output tray.

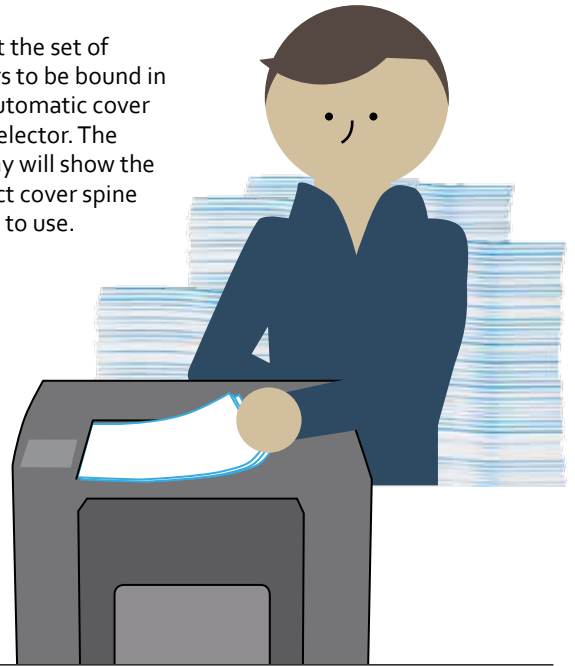
The output tray expands to accommodate the documents as they emerge; bound and ready to use.



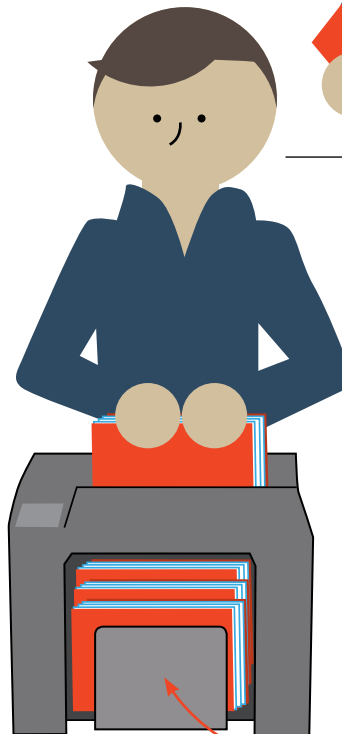
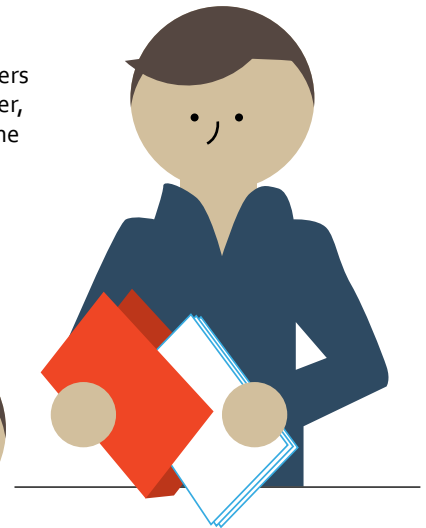
Compartment for Operator's Manual and Quick Guide

## HOW DROP&GO WORKS

1. Insert the set of papers to be bound in the automatic cover size selector. The display will show the correct cover spine width to use.



2. Place the set of papers in a Bindomatic cover, with the correct spine size, and align.



3. **DROP** the ready-to-bind document when the green LED indicator light is lit.

4. **GO!** The machine will signal when the thermal binding process is complete. Remove the bound document(s) from the output tray.